

Running Order Information

Evergreen Afghan Hound Club Agility Trial

Friday- Sunday, Oct. 24-26, 2014

Argus Ranch Facility for Dogs - 35612 212th Way SE, Auburn, WA 98092
www.argusranch.com - This trial will be held indoors at Argus Ranch.

Driving Directions

From North or South End

Take I-5, I-405, SR-167 to Highway 18 eastbound. Exit onto Auburn-Black Diamond Road eastbound. Turn RIGHT onto SE Green Valley Road (just past Neely Mansion). Follow for about 7.5 miles. Turn RIGHT onto 212th Way SE
Take First LEFT into Argus Ranch and follow drive straight ahead to Arena and signed parking.

From SR 169

Turn onto SE Green Valley Road (in front of the Boondocks Nursery). Go about four miles. Turn LEFT onto 212th Way SE. Go over the Cement Bridge. (Whitney Bridge) Take First LEFT into ARGUS RANCH and follow drive straight ahead to Arena and signed parking.

Judging Information

Judges: Alan Arthur and Susan Leitner

Fri/Sat/Sun:

Ring 1: Alan Arthur Exc Fast, Exc Std, Exc Jww

Ring 2: Susan Leitner Opn Fast, Nov Fast, Opn Std, Nov Std, T2B, Opn Jww, Nov Jww

Friday / Sunday – Small to Tall, Saturday – Tall to Small

Special Events on Saturday

CAT: Coursing Ability Test – Ever wanted to see if your dog can lure course? The Cascade Coursing Club is offering a CAT on Saturday. More info is available at <http://www.cascadecoursing.org/calendar.html>. They are also having a doggie costume contest at lunch – so come prepared ☺

R2Agility FCI Tournament Series

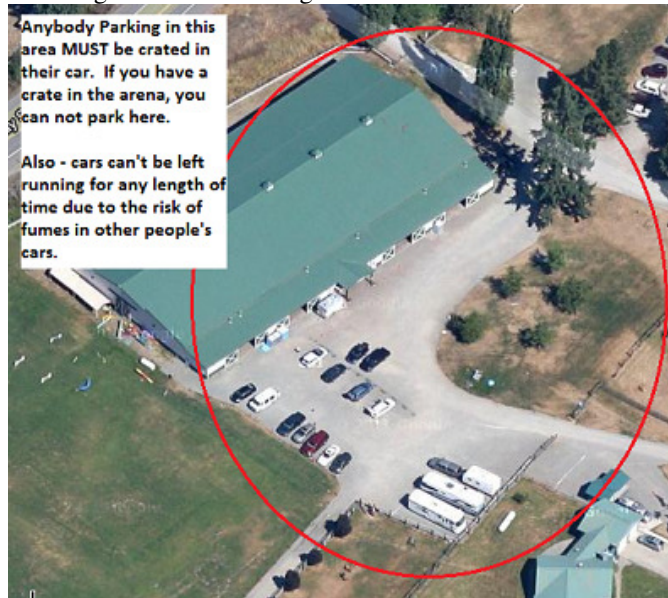
Saturday is day 1 of 4 for the R2Agility FCI Tournament Series. R2Agility will be running this tournament using courses from recent FCI world events (modified to fit our facility). Days 2-4 will be at the other Evergreen Afghan Hound events in Nov, Jan, and Feb. Both Agility and Jumpers will be offered to crown a champion for the entire series for each jump height in Feb. 2015. Go to www.r2agilityonline.com for a premium and information. The tournament is open to all dogs over 15 months old at any agility level. Entries will be accepted until Saturday at 1:00 PM. Please enter sooner if you can to cut down paperwork on Saturday.

Crating / Center Aisle / Parking Information

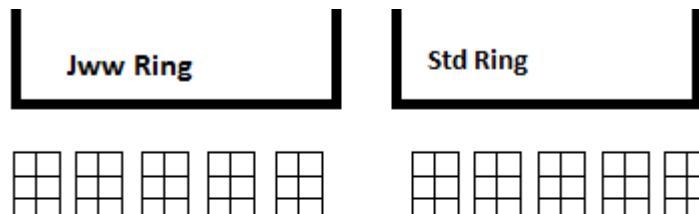
Due to the large numbers of dogs at the show, we will be extremely tight on crating space, parking, and the space between the rings. Because of that, we will have some very important rules and requests. Hopefully, these will let all of us have a great time at the show !

Obedience Barn: If you think that you would like to crate in the obedience barn instead of the arena, please email us with the subject line “EAHC – Obedience Barn – Yes”. If we get enough people to request that, we’ll rent the space for you to use.

Car Parking: If you are parking in the area indicated on this diagram – basically anywhere near the Arena, you may not also have a crate inside. This area is reserved for ONLY those people that want to crate out of their cars. Also make sure to not run your car’s engine excessively as that puts exhaust fumes in the car next to yours and gasses out those dogs !!!



Crating Inside: If you are crating in the arena, please use the “SnoKing” crating layout instead of just putting crates up against the walls. Here is a simple picture of that style.



Crating in rows as shown. This lets us get more people into the area than if we just go up against the wall. Please put your chairs along the rings.

Center Aisle: Make sure to keep the center aisle clear for the dogs that are running. Please don’t loiter there unless you are getting ready to run 😊

Agility Trial Information

- Measurements:** If you have not been measured or indicated that you have a height card, you must do so before you run. The gate sheets will be highlighted to indicate if you need to have your dog measured or show its card. **A VMO is scheduled to be at the show, so measurements will be official.**
- Start Times:** **9 AM on Friday – 8 AM on the Weekend for first on the line in both rings.**
- Class Schedule:** **See the charts below**
- Walkthroughs:** There will be a single walkthrough for each class with Exc Std and Jww split by height. The preliminary split is for Exc to be in 4 groups on the weekend (4/8/12, 16, 20, 24/26).
- Veterinarian:** **(after hours)** Animal Emergency Clinic, 718 Auburn Way N., Auburn, WA (253) 939-6272
Directions: From Argus Ranch – turn right from the Argus driveway, then left on Green Valley Rd for about 7 miles. Turn left on Auburn – Black Diamond road for about ¼ mile to the entrance to Hwy 18 West. Take Hwy 18 about 1.5 miles to the Auburn Way exit. Take a left at on Auburn way and drive for about 2 blocks to the clinic.
- Moveups:** The deadline for moveups is Monday Oct. 20th, at 6PM. Moveups must be received in writing or email by that deadline. Day-to-Day moveups are being accepted for Saturday and Sunday but **MUST** be received no later than ½ hour after the last class of the current day.
- RVs:** All RV camping must be arranged with Argus Ranch. Contact Terri Kaluza at arfreservations@gmail.com for more details.

| | Ring 1 – Alan Arthur | Ring 2 – Susan Leitner |
|---|--|--|
| <p>Friday 9:00 AM start</p> <p>Small to Tall</p> <p>Other than the start time for the first class, the times are approximate only. Please plan on being at the show site before these times to make sure you get your walkthrus and runs.</p> | <p><u>Exc Fast</u> Walk all heights Run all heights 9:00</p> <p>Course Change</p> <p><u>Exc Standard</u> Walk 4-12 Run 4-12 10:00</p> <p>Walk 16 Run 16 11:00</p> <p>Walk 20 Run 20 11:35</p> <p>Walk 24-26 Run 24-26 12:30</p> <p>Course Change</p> <p><u>Exc Jumpers</u> Walk 4-12 Run 4-12 1:20</p> <p>Walk 16 Run 16 2:00</p> <p>Walk 20 Run 20 2:40</p> <p>Walk 24-26 Run 24-26 3:20</p> <p>3:50 done</p> | <p><u>Open Fast</u> Walk Run all heights 9:00</p> <p>Course Change</p> <p><u>Nov Fast</u> Walk all heights Run all heights 9:50</p> <p>Course Change</p> <p><u>Open Std</u> Walk all heights Run all heights 10:40</p> <p>Course Change</p> <p><u>Nov Std</u> Walk all heights Run all heights 11:55</p> <p>Course Change</p> <p><u>Open Jww</u> Walk all heights Run all heights 12:55</p> <p>Course Change</p> <p><u>Nov Jww</u> Walk all heights Run all heights 1:55</p> <p>Course Change</p> <p><u>T2B</u> Walk all heights Run all heights 2:45</p> <p>3:25 done</p> |

| | Ring 1 – Alan Arthur | Ring 2 – Susan Leitner |
|---|---|---|
| <p>Saturday 8:00 AM start</p> <p>Tall to Small</p> <p>Other than the start time for the first class, the times are approximate only. Please plan on being at the show site before these times to make sure you get your walkthrus and runs.</p> | <p>Exc Fast Walk all heights Run all heights 8:00</p> <p>Course Change</p> <p>Exc Standard Walk 24-26 Run 24-26 9:10</p> <p>Walk 20 Run 20 10:00</p> <p>Walk 16 Run 16 11:00</p> <p>Walk 4-12 Run 4-12 11:55</p> <p>Course Change</p> <p>Exc Jumpers Walk 24-26 Run 24-26 1:20</p> <p>Walk 20 Run 20 2:00</p> <p>Walk 16 Run 16 2:50</p> <p>Walk 12-4 Run 12-4 3:30</p> <p>4:20 done</p> | <p>Open Fast Walk Run all heights 8:00</p> <p>Course Change</p> <p>Nov Fast Walk all heights Run all heights 8:50</p> <p>Course Change</p> <p>Open Std Walk all heights Run all heights 9:45</p> <p>Course Change</p> <p>Nov Std Walk all heights Run all heights 11:00</p> <p>Course Change</p> <p>Open Jww Walk all heights Run all heights 12:15</p> <p>Course Change</p> <p>Nov Jww Walk all heights Run all heights 1:15</p> <p>Course Change</p> <p>T2B Walk all heights Run all heights 2:15</p> <p>3:00 done</p> |

| | Ring 1 – Alan Arthur | Ring 2 – Susan Leitner | |
|---|--|--|--|
| <p>Sunday 8:00 AM start</p> <p>Small to Tall</p> <p>Other than the start time for the first class, the times are approximate only. Please plan on being at the show site before these times to make sure you get your walkthrus and runs.</p> | <p>Exc Fast Walk all heights Run all heights 8:00</p> <p>Course Change</p> | <p>Open Fast Walk Run all heights 8:00</p> <p>Course Change</p> | |
| | <p>Exc Standard Walk 4-12 Run 4-12 9:05</p> <p>Walk 16 Run 16 10:15</p> | <p>Nov Fast Walk all heights Run all heights 8:50</p> <p>Course Change</p> | |
| | <p>Walk 20 Run 20 11:00</p> <p>Walk 24-26 Run 24-26 12:05</p> | <p>Open Std Walk all heights Run all heights 9:45</p> <p>Course Change</p> | |
| | <p>Course Change</p> <p>Exc Jumpers Walk 4-12 Run 4-12 1:00</p> | <p>Nov Std Walk all heights Run all heights 11:00</p> <p>Course Change</p> | |
| | <p>Walk 16 Run 16 2:00</p> <p>Walk 20 Run 20 2:40</p> | <p>Open Jww Walk all heights Run all heights 12:15</p> <p>Course Change</p> | |
| | <p>Walk 24-26 Run 24-26 3:30</p> <p>3:50 done</p> | <p>Nov Jww Walk all heights Run all heights 1:20</p> <p>Course Change</p> | |
| | | <p>T2B Walk all heights Run all heights 2:00</p> <p>2:50 done</p> | |
| | | | |
| | | | |
| | | | |

The following tables do NOT show the order of classes. For that information, see the schedule charts above
 The following entry stats are contingent on move-ups not yet received

Friday – 376 runs

| | | | | | | | | | | | |
|----------------------|----------|----------|-----------|-----------|-----------|-----------|-----------|-----------|-----------|--------------------|-------------|
| STD | NOV | | | | | | | | | | |
| Division | 4 | 8 | 12 | 16 | 20 | 24 | 26 | 14 | 18 | Judge | Ring |
| NOV A | | | | | 1 | | | | | Susan Leitner | 2 |
| NOV B | | 1 | 1 | 1 | 3 | | | | | Susan Leitner | 2 |
| NOV P | | | 1 | 1 | 2 | | | | | Susan Leitner | 2 |
| NOV | | 1 | 2 | 2 | 6 | | | | | TOTAL RUNS | 11 |
| STD | OPN | | | | | | | | | | |
| Division | 4 | 8 | 12 | 16 | 20 | 24 | 26 | 14 | 18 | Judge | Ring |
| OPEN | | | 4 | 2 | 7 | 4 | | | | Susan Leitner | 2 |
| OPEN P | | 1 | 1 | 1 | | | | | | Susan Leitner | 2 |
| OPN | | 1 | 5 | 3 | 7 | 4 | | | | TOTAL RUNS | 20 |
| STD | EXC | | | | | | | | | | |
| Division | 4 | 8 | 12 | 16 | 20 | 24 | 26 | 14 | 18 | Judge | Ring |
| EX | | | | 1 | 5 | 4 | | | | Alan Arthur | 1 |
| EX P | | | 1 | | 1 | | | | | Alan Arthur | 1 |
| MAS | | 9 | 18 | 14 | 25 | 12 | 2 | | | Alan Arthur | 1 |
| MAS P | 1 | 5 | 4 | 7 | 4 | | | | | Alan Arthur | 1 |
| EXC | 1 | 14 | 23 | 22 | 35 | 16 | 2 | | | TOTAL RUNS | 113 |
| JWW | NOV | | | | | | | | | | |
| Division | 4 | 8 | 12 | 16 | 20 | 24 | 26 | 14 | 18 | Judge | Ring |
| NOV A | | | | | 1 | | | | | Susan Leitner | 2 |
| NOV B | | 1 | 1 | 1 | 3 | | | | | Susan Leitner | 2 |
| NOV P | | | | 1 | 1 | | | | | Susan Leitner | 2 |
| NOV | | 1 | 1 | 2 | 5 | | | | | TOTAL RUNS | 9 |
| JWW | OPN | | | | | | | | | | |
| Division | 4 | 8 | 12 | 16 | 20 | 24 | 26 | 14 | 18 | Judge | Ring |
| OPEN | | | 1 | 1 | 6 | 3 | | | | Susan Leitner | 2 |
| OPEN P | | 1 | 1 | 1 | 2 | | | | | Susan Leitner | 2 |
| OPN | | 1 | 2 | 2 | 8 | 3 | | | | TOTAL RUNS | 16 |
| JWW | EXC | | | | | | | | | | |
| Division | 4 | 8 | 12 | 16 | 20 | 24 | 26 | 14 | 18 | Judge | Ring |
| EX | | | 2 | 3 | 7 | 5 | | | | Alan Arthur | 1 |
| EX P | | | | 1 | | | | | | Alan Arthur | 1 |
| MAS | | 9 | 17 | 13 | 25 | 15 | 2 | | | Alan Arthur | 1 |
| MAS P | 1 | 5 | 4 | 5 | 4 | | | | | Alan Arthur | 1 |
| EXC | 1 | 14 | 23 | 22 | 36 | 20 | 2 | | | TOTAL RUNS | 118 |
| FAST | NOV | | | | | | | | | | |
| Division | 4 | 8 | 12 | 16 | 20 | 24 | 26 | 14 | 18 | Judge | Ring |
| NOV B | | | 2 | 1 | 2 | 1 | | | | Susan Leitner | 2 |
| NOV P | | | 1 | | 1 | | | | | Susan Leitner | 2 |
| NOV | | | 3 | 1 | 3 | 1 | | | | TOTAL RUNS | 8 |
| FAST | OPN | | | | | | | | | | |
| Division | 4 | 8 | 12 | 16 | 20 | 24 | 26 | 14 | 18 | Judge | Ring |
| OPEN | | | 2 | 1 | 5 | 2 | | | | Susan Leitner | 2 |
| OPEN P | | 1 | | | 1 | | | | | Susan Leitner | 2 |
| OPN | | 1 | 2 | 1 | 6 | 2 | | | | TOTAL RUNS | 12 |
| FAST | EXC | | | | | | | | | | |
| Division | 4 | 8 | 12 | 16 | 20 | 24 | 26 | 14 | 18 | Judge | Ring |
| EX | | | 1 | | 4 | 2 | | | | Alan Arthur | 1 |
| EX P | | | 1 | 1 | | | | | | Alan Arthur | 1 |
| MAS | | 2 | 2 | 3 | 6 | 3 | | | | Alan Arthur | 1 |
| MAS P | | | | 3 | | | | | | Alan Arthur | 1 |
| EXC | | 2 | 4 | 7 | 10 | 5 | | | | TOTAL RUNS | 28 |
| T2B | T2B | | | | | | | | | | |
| Division | 4 | 8 | 12 | 16 | 20 | 24 | 26 | 14 | 18 | Judge | Ring |
| PREF | | 1 | 3 | 5 | 2 | | | | | Susan Leitner | 2 |
| REG | | 1 | 4 | 4 | 14 | 7 | | | | Susan Leitner | 2 |
| T2B | | 2 | 7 | 9 | 16 | 7 | | | | TOTAL RUNS | 41 |
| Judge Totals | | | | | | | | | | Ring Totals | |
| Alan Arthur | | 259 | | | | | | | | Ring 1 | 259 |
| Susan Leitner | | 117 | | | | | | | | Ring 2 | 117 |

Saturday – 498 runs

| STD | NOV | | | | | | | | | | | |
|----------------------|----------|----------|-----------|-----------|-----------|-----------|-----------|-----------|-----------|--------------------|-------------|--|
| Division | 4 | 8 | 12 | 16 | 20 | 24 | 26 | 14 | 18 | Judge | Ring | |
| NOV A | | | | | 1 | | | | | Susan Leitner | 2 | |
| NOV B | | 1 | 3 | 4 | 2 | 2 | | | | Susan Leitner | 2 | |
| NOV P | | | 1 | 1 | 4 | | | | | Susan Leitner | 2 | |
| NOV | | 1 | 4 | 5 | 7 | 2 | | | | TOTAL RUNS | 19 | |
| Division | 4 | 8 | 12 | 16 | 20 | 24 | 26 | 14 | 18 | Judge | Ring | |
| OPN | | | 4 | 5 | 6 | 4 | | | | Susan Leitner | 2 | |
| OPN P | | | 2 | 1 | | | | | | Susan Leitner | 2 | |
| OPN | | | 6 | 6 | 6 | 4 | | | | TOTAL RUNS | 22 | |
| Division | 4 | 8 | 12 | 16 | 20 | 24 | 26 | 14 | 18 | Judge | Ring | |
| EX | | | | 3 | 6 | 4 | | | | Alan Arthur | 1 | |
| EX P | | | | 1 | | | | | | Alan Arthur | 1 | |
| MAS | | 11 | 24 | 21 | 41 | 17 | 3 | | | Alan Arthur | 1 | |
| MAS P | 4 | 6 | 3 | 7 | 2 | | | | | Alan Arthur | 1 | |
| EXC | 4 | 17 | 27 | 32 | 49 | 21 | 3 | | | TOTAL RUNS | 153 | |
| Division | 4 | 8 | 12 | 16 | 20 | 24 | 26 | 14 | 18 | Judge | Ring | |
| NOV A | | | | | 1 | | | | | Susan Leitner | 2 | |
| NOV B | | 1 | 4 | 3 | 3 | 2 | | | | Susan Leitner | 2 | |
| NOV P | | | 1 | 1 | 3 | | | | | Susan Leitner | 2 | |
| NOV | | 1 | 5 | 4 | 7 | 2 | | | | TOTAL RUNS | 19 | |
| Division | 4 | 8 | 12 | 16 | 20 | 24 | 26 | 14 | 18 | Judge | Ring | |
| OPN | | | 1 | 3 | 5 | 4 | | | | Susan Leitner | 2 | |
| OPN P | | | 2 | 2 | 1 | | | | | Susan Leitner | 2 | |
| OPN | | | 3 | 5 | 6 | 4 | | | | TOTAL RUNS | 18 | |
| Division | 4 | 8 | 12 | 16 | 20 | 24 | 26 | 14 | 18 | Judge | Ring | |
| EX | | | 3 | 7 | 7 | 5 | | | | Alan Arthur | 1 | |
| EX P | | | 1 | | | | | | | Alan Arthur | 1 | |
| MAS | | 12 | 22 | 20 | 41 | 16 | 3 | | | Alan Arthur | 1 | |
| MAS P | 4 | 6 | 2 | 6 | 2 | | | | | Alan Arthur | 1 | |
| EXC | 4 | 18 | 28 | 33 | 50 | 21 | 3 | | | TOTAL RUNS | 157 | |
| Division | 4 | 8 | 12 | 16 | 20 | 24 | 26 | 14 | 18 | Judge | Ring | |
| NOV B | | 1 | | 2 | 4 | 2 | | | | Susan Leitner | 2 | |
| NOV P | | | | | 1 | | | | | Susan Leitner | 2 | |
| NOV | | 1 | | 2 | 5 | 2 | | | | TOTAL RUNS | 10 | |
| Division | 4 | 8 | 12 | 16 | 20 | 24 | 26 | 14 | 18 | Judge | Ring | |
| OPN | | | 3 | 2 | 3 | 3 | | | | Susan Leitner | 2 | |
| OPN P | 1 | | | | | | | | | Susan Leitner | 2 | |
| OPN | 1 | | 3 | 2 | 3 | 3 | | | | TOTAL RUNS | 12 | |
| Division | 4 | 8 | 12 | 16 | 20 | 24 | 26 | 14 | 18 | Judge | Ring | |
| EX | | 2 | | | 5 | 1 | | | | Alan Arthur | 1 | |
| EX P | 1 | | | 1 | | | | | | Alan Arthur | 1 | |
| MAS | | 2 | 3 | 4 | 11 | 5 | 1 | | | Alan Arthur | 1 | |
| MAS P | | | | 3 | | | | | | Alan Arthur | 1 | |
| EXC | 1 | 4 | 3 | 8 | 16 | 6 | 1 | | | TOTAL RUNS | 39 | |
| Division | 4 | 8 | 12 | 16 | 20 | 24 | 26 | 14 | 18 | Judge | Ring | |
| PREF | 1 | | 3 | 1 | 2 | | | | | Susan Leitner | 2 | |
| REG | | 1 | 8 | 8 | 16 | 8 | 1 | | | Susan Leitner | 2 | |
| T2B | 1 | 1 | 11 | 9 | 18 | 8 | 1 | | | TOTAL RUNS | 49 | |
| Judge Totals | | | | | | | | | | Ring Totals | | |
| Alan Arthur | | | | | | | | | | Ring 1 | 349 | |
| Susan Leitner | | 349 | | | | | | | | Ring 2 | 149 | |

Sunday – 471 runs

| | | | | | | | | | | | | |
|---------------------|----------|----------|-----------|-----------|-----------|-----------|-----------|-----------|-----------|--------------------|-------------|-----|
| STD | NOV | | | | | | | | | | | |
| Division | 4 | 8 | 12 | 16 | 20 | 24 | 26 | 14 | 18 | Judge | Ring | |
| NOV A | | | | | 1 | | | | | Susan Leitner | 2 | |
| NOV B | | 1 | 3 | 1 | 1 | 3 | | | | Susan Leitner | 2 | |
| NOV P | | | 1 | 2 | 4 | | | | | Susan Leitner | 2 | |
| NOV | | 1 | 4 | 3 | 6 | 3 | | | | TOTAL RUNS | 17 | |
| STD | OPN | | | | | | | | | | | |
| Division | 4 | 8 | 12 | 16 | 20 | 24 | 26 | 14 | 18 | Judge | Ring | |
| OPEN | | | 3 | 2 | 7 | 5 | | | | Susan Leitner | 2 | |
| OPEN P | | 2 | | 3 | 1 | | | | | Susan Leitner | 2 | |
| OPN | | 2 | 3 | 5 | 8 | 5 | | | | TOTAL RUNS | 23 | |
| STD | EXC | | | | | | | | | | | |
| Division | 4 | 8 | 12 | 16 | 20 | 24 | 26 | 14 | 18 | Judge | Ring | |
| EX | | | 1 | 3 | 5 | 3 | | | | Alan Arthur | 1 | |
| EX P | | | | | 2 | | | | | Alan Arthur | 1 | |
| MAS | | 12 | 21 | 17 | 31 | 19 | 3 | | | Alan Arthur | 1 | |
| MAS P | 5 | 3 | 4 | 9 | 4 | | | | | Alan Arthur | 1 | |
| EXC | 5 | 15 | 26 | 29 | 42 | 22 | 3 | | | TOTAL RUNS | 142 | |
| JWW | NOV | | | | | | | | | | | |
| Division | 4 | 8 | 12 | 16 | 20 | 24 | 26 | 14 | 18 | Judge | Ring | |
| NOV A | | | | | 1 | | | | | Susan Leitner | 2 | |
| NOV B | | 1 | 2 | | 2 | 3 | | | | Susan Leitner | 2 | |
| NOV P | | | 1 | 2 | 3 | | | | | Susan Leitner | 2 | |
| NOV | | 1 | 3 | 2 | 6 | 3 | | | | TOTAL RUNS | 15 | |
| JWW | OPN | | | | | | | | | | | |
| Division | 4 | 8 | 12 | 16 | 20 | 24 | 26 | 14 | 18 | Judge | Ring | |
| OPEN | | | 1 | 3 | 5 | 4 | | | | Susan Leitner | 2 | |
| OPEN P | | 2 | | 3 | 2 | | | | | Susan Leitner | 2 | |
| OPN | | 2 | 1 | 6 | 7 | 4 | | | | TOTAL RUNS | 20 | |
| JWW | EXC | | | | | | | | | | | |
| Division | 4 | 8 | 12 | 16 | 20 | 24 | 26 | 14 | 18 | Judge | Ring | |
| EX | | | 4 | 4 | 7 | 4 | | | | Alan Arthur | 1 | |
| EX P | | | | 1 | 1 | | | | | Alan Arthur | 1 | |
| MAS | | 13 | 20 | 17 | 31 | 20 | 3 | | | Alan Arthur | 1 | |
| MAS P | 6 | 3 | 4 | 7 | 4 | | | | | Alan Arthur | 1 | |
| EXC | 6 | 16 | 28 | 29 | 43 | 24 | 3 | | | TOTAL RUNS | 149 | |
| FAST | NOV | | | | | | | | | | | |
| Division | 4 | 8 | 12 | 16 | 20 | 24 | 26 | 14 | 18 | Judge | Ring | |
| NOV B | | | | 1 | 3 | 2 | | | | Susan Leitner | 2 | |
| NOV P | | | | 2 | 2 | | | | | Susan Leitner | 2 | |
| NOV | | | | 3 | 5 | 2 | | | | TOTAL RUNS | 10 | |
| FAST | OPN | | | | | | | | | | | |
| Division | 4 | 8 | 12 | 16 | 20 | 24 | 26 | 14 | 18 | Judge | Ring | |
| OPEN | | | 3 | 2 | 2 | 3 | | | | Susan Leitner | 2 | |
| OPEN P | 1 | 1 | | | | | | | | Susan Leitner | 2 | |
| OPN | 1 | 1 | 3 | 2 | 2 | 3 | | | | TOTAL RUNS | 12 | |
| FAST | EXC | | | | | | | | | | | |
| Division | 4 | 8 | 12 | 16 | 20 | 24 | 26 | 14 | 18 | Judge | Ring | |
| EX | | 1 | | | 4 | 2 | | | | Alan Arthur | 1 | |
| MAS | | 3 | 4 | 4 | 9 | 5 | 1 | | | Alan Arthur | 1 | |
| MAS P | | | | 3 | | | | | | Alan Arthur | 1 | |
| EXC | | 4 | 4 | 7 | 13 | 7 | 1 | | | TOTAL RUNS | 36 | |
| T2B | T2B | | | | | | | | | | | |
| Division | 4 | 8 | 12 | 16 | 20 | 24 | 26 | 14 | 18 | Judge | Ring | |
| PREF | 1 | 1 | 2 | 4 | 1 | | | | | Susan Leitner | 2 | |
| REG | | 1 | 5 | 8 | 15 | 8 | 1 | | | Susan Leitner | 2 | |
| T2B | 1 | 2 | 7 | 12 | 16 | 8 | 1 | | | TOTAL RUNS | 47 | |
| Judge Totals | | | | | | | | | | Ring Totals | | |
| Alan Arthur | | 327 | | | | | | | | | Ring 1 | 327 |
| Susan Leitner | | 144 | | | | | | | | | Ring 2 | 144 |